

GENV

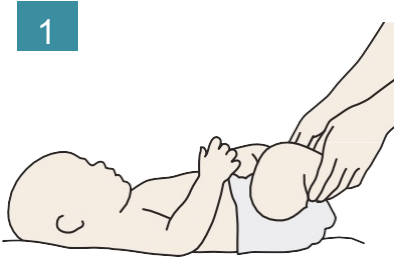
We believe that childhood health problems can be solved.

## GenV Nappy Swab Instructions

### Collecting your child's poo sample

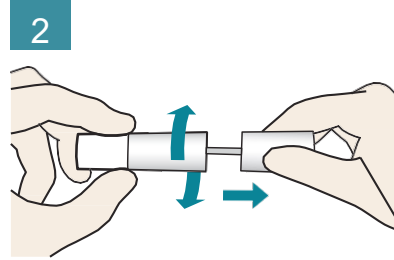
#### - before you start

- Please read these instructions
- **Child no longer in nappies?** Just take a small swab from their poo or toilet paper/wipes.
- **Forgot or hard to collect?** Return your sample at any time - every sample is important
- Lost the kit or made a mistake? - contact us:  
Phone: 1800 436 888 Website: [www.genv.org.au](http://www.genv.org.au)



1

- You will need:
  1. These instructions,
  2. Your nappy swab kit, and
  3. A pen
- Change your baby's dirty nappy
- Put the dirty nappy to one side until your baby is back in a safe position (e.g. crib)



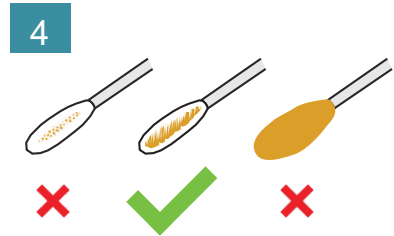
2

- Open the dirty nappy on a firm surface
- Twist and pull the tube to open, so the swab tip is free
- Be careful to not touch the swab tip on your skin or any other surface



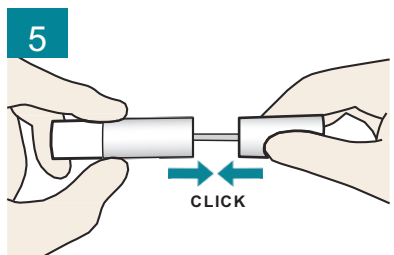
3

- Lightly touch the swab tip to pick up a small smear of poo from the dirty nappy
- Try not to let the swab tip touch the nappy directly



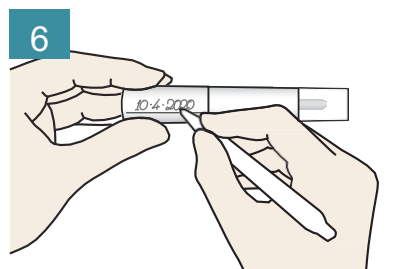
4

- Don't take too much poo
- The swab tip only needs to be coloured a bit



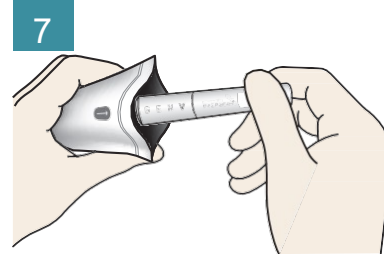
5

- Put the swab straight back into the tube
- Don't let the swab tip touch your skin or any other surface
- Click the tube firmly shut



6

- Write the date on the tube, where it says 'Date collected'



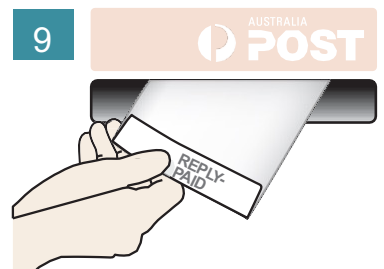
7

- Put the tube into the white pouch
- Press the pouch edges together to seal, with as little air as possible



8

- Put the white pouch into the reply-paid envelope
- Seal the envelope
- It can stay at room temperature (not in the fridge or freezer)



9

- Post the envelope to GenV within a week, or as soon as possible – put it into any Australia Post box, no stamp needed